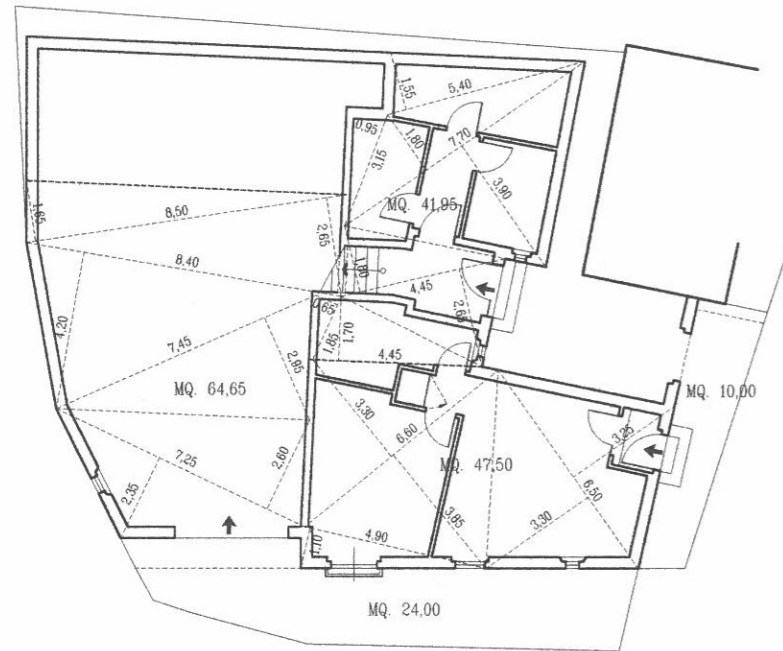
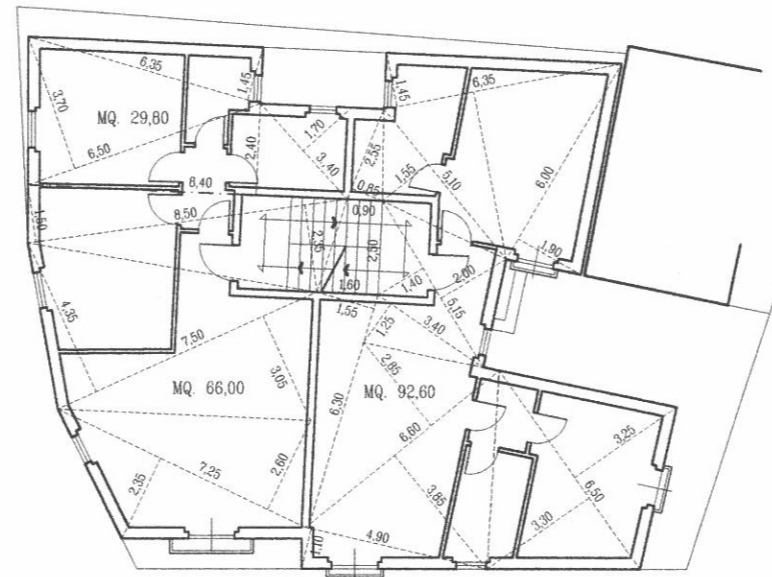


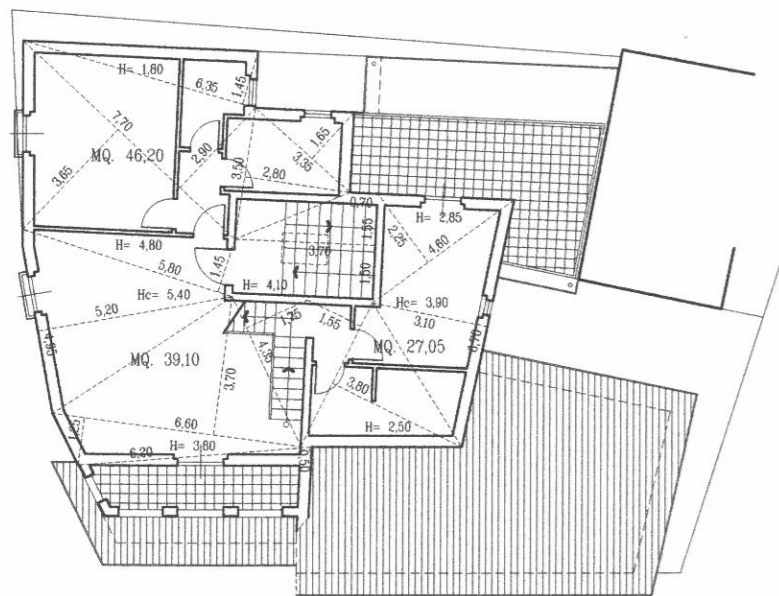
PIANTA PIANO SEMINTERRATO scala 1:200



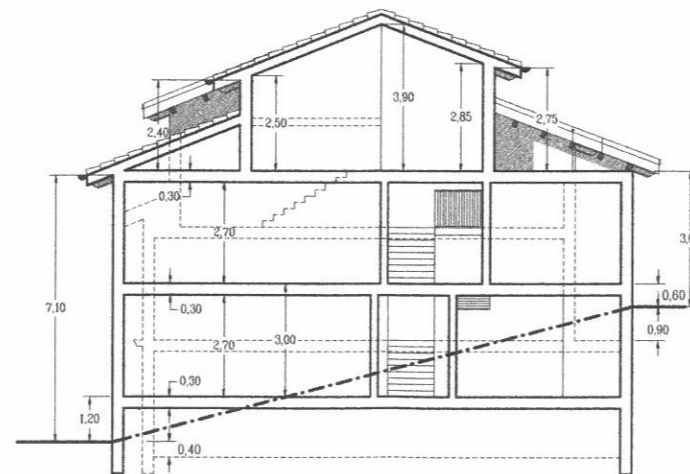
PIANTA PIANO RIALZATO scala 1:200



PIANTA PIANO SOTTOTETTO scala 1:200



SEZIONE TRASVERSALE scala 1:200



Volume di progetto:

mq. 64,65x h 3,00/2	= mc.	96,97
mq. 47,50x h(4,20+3,00)/2=	mc.	171,00
mq. 41,95x h(3,00+0,60)/2=	<u>mc.</u>	<u>75,51</u>
piano semint. =	mc.	343,48
mq. 66,00x h 3,00	= mc.	198,00
mq. 29,80x h(3,00+2,10)/2=	mc.	75,99
mq. 92,60x h 3,00	= <u>mc.</u>	<u>277,80</u>
piano rialzato =	mc.	551,79
mq. 39,10x h(4,60+5,10)/2=	mc.	189,64
mq. 46,20x h(1,80+4,10)/2=	mc.	136,29
mq. 27,05x h(3,20+3,35)/2=	<u>mc.</u>	<u>88,59</u>
piano sottot. =	<u>mc.</u>	<u>414,52</u>
		Totale MC. 1.309,79

Superficie fondiaria:

p.lla 197	= mq.	120,00
p.lla 199	= mq.	130,00
p.lla 200/p=	mq.	6,00
p.lla 201/p=	<u>mq.</u>	<u>7,00</u>
		Totale MQ. 263,00

If= 5,00 mc/mq

Volume ammissibile:

mq. 263x5,00 =	Totale <u>MC. 1.315,00</u>
	Differenza MC. -5,21

Volume in variante al PdR:

(SCP-SCA)= MQ.(188,40-167,00)=	21,40
piano semint.: mq. 21,40x h(4,20+3,00)/2=	mc. 77,04
piano rialzato: mq. 21,40x h 3,00	= mc. 64,20
<u>Totale MC. 141,24</u>	

Aree da cedere: mq. 24,00+10,00= MQ. 34,00